

ATLAS DE APOIO ÀS AULAS DE ANATOMIA PATOLÓGICA

ELABORADO PELO LABORATÓRIO DE ANATOMIA PATOLÓGICA DA
UNIVERSIDADE FERNANDO PESSOA AUTORES MESTRE CÉU COSTA
MESTRE SÓFIA PEREIRA · RESPONSÁVEL PROF. DOUTOR LÚCIO SANTOS

TODAS AS FOTOGRAFIAS DESTES ATLAS SÃO PROVENIENTES
DE LÂMINAS HISTOLÓGICAS REALIZADAS NO LABORATÓRIO
DE ANATOMIA PATOLÓGICA DA UNIVERSIDADE FERNANDO
PESSOA, ESTANDO DISPONÍVEIS PARA VISUALIZAÇÃO PELOS
ALUNOS DURANTE AS AULAS.

ÍNDICE

- 02 LESÕES REVERSÍVEIS
- 13 LESÕES IRREVERSÍVEIS
- 15 INFLAMAÇÃO AGUDA
- 18 INFLAMAÇÃO CRÓNICA
- 20 CICATRIZAÇÃO
- 22 OUTRAS PATOLOGIAS
- 24 COLORAÇÕES ESPECIAIS

ABREVIATURAS

(AMP) AMPLIFICAÇÃO

(AP) AZUL DA PRÚSSIA

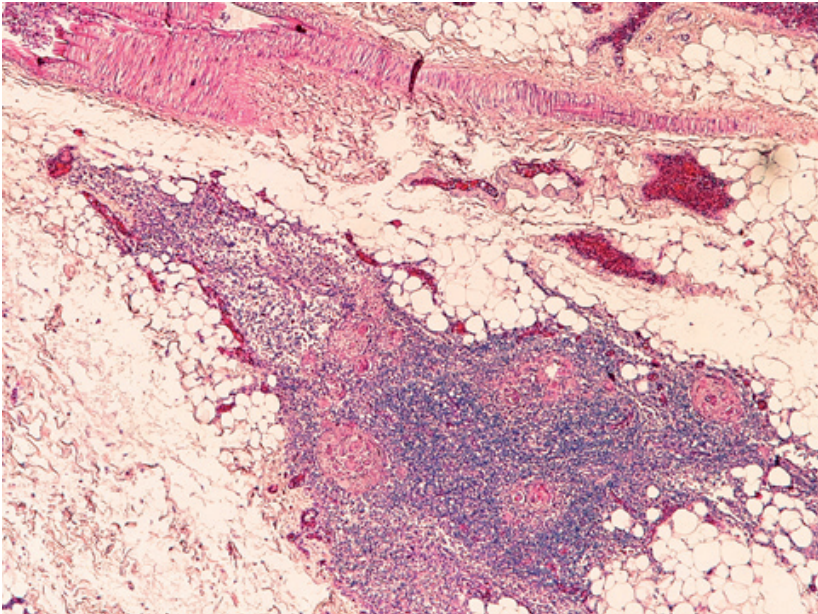
(HE) HEMATOXILINA E EOSINA

(MF) MASSON – FONTANA

(PAS) PERIODIC ACID SHIFF (*ÁCIDO PERIÓDICO DE SHIFF*)

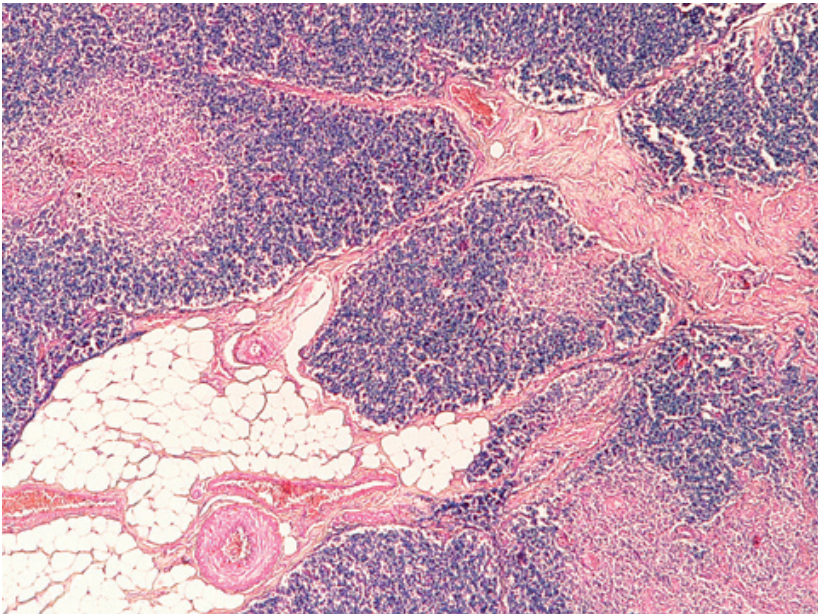
PORTO, 2008

LESÕES REVERSÍVEIS



ATROFIA HE (TIMO-HUMANO)

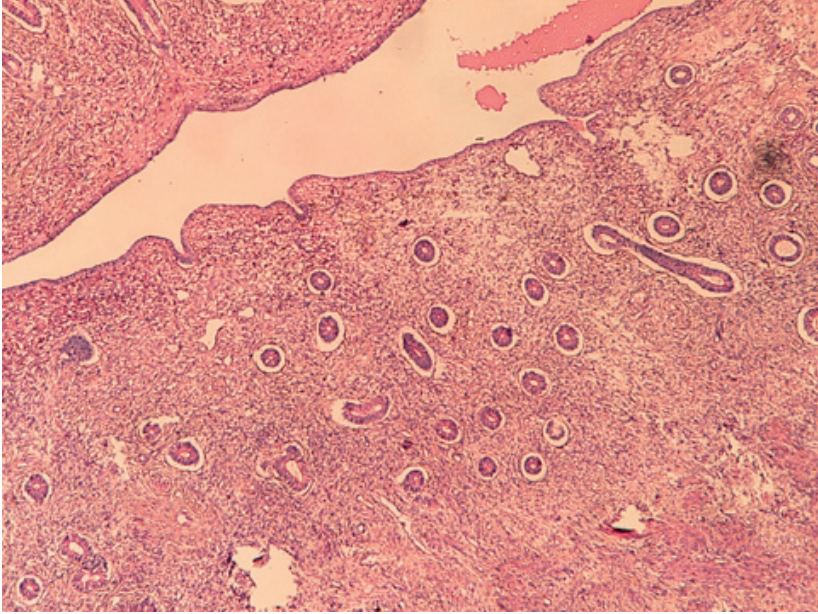
AMP 40X



ATROFIA HE (TIMO-PORCO)

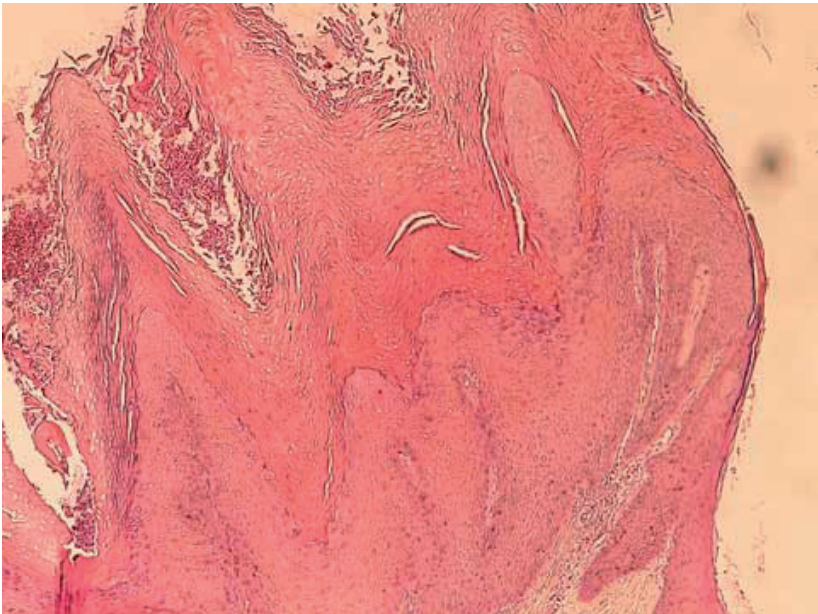
AMP 40X

LESÕES REVERSÍVEIS



ATROFIA HE (CÉRVIX-HUMANO)

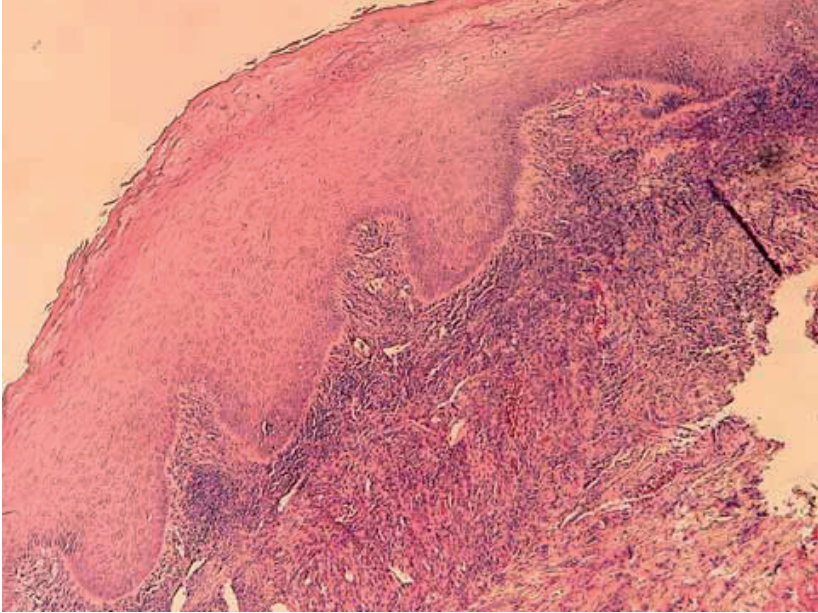
AMP 40X



HIPERPLASIA HE (VERRUGA VULVAR -HUMANO)

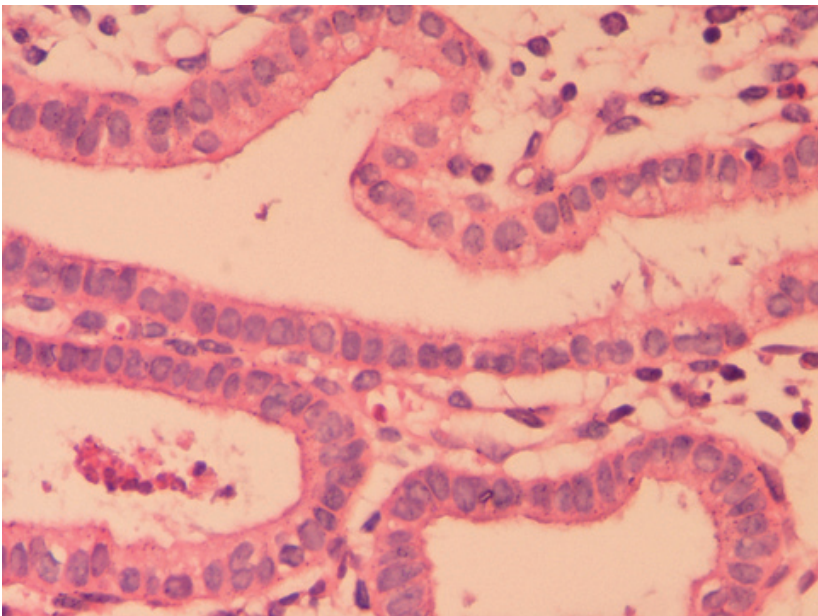
AMP 40X

LESÕES REVERSÍVEIS



HIPERPLASIA HE (MUCOSA ORAL-HUMANO)

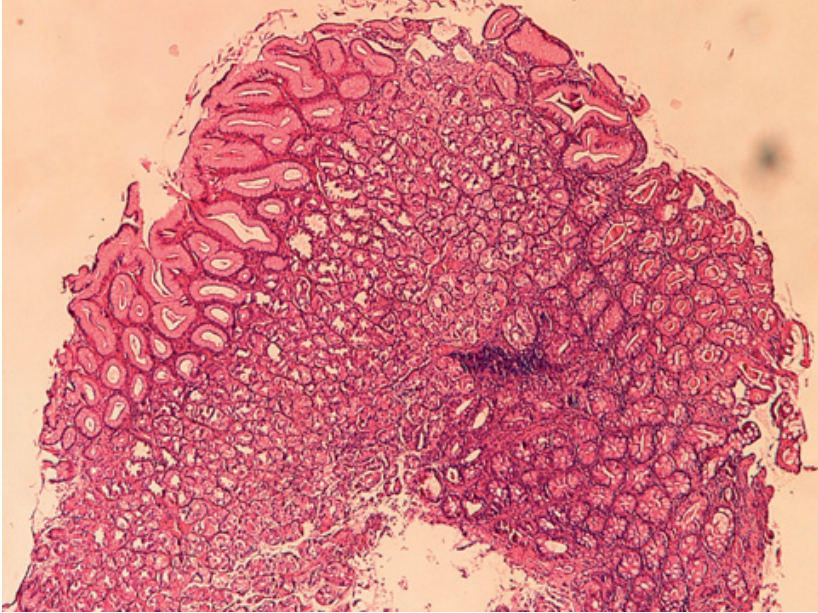
AMP 40X



METAPLASIA CILIADA HE (CÉRVIX-HUMANO)

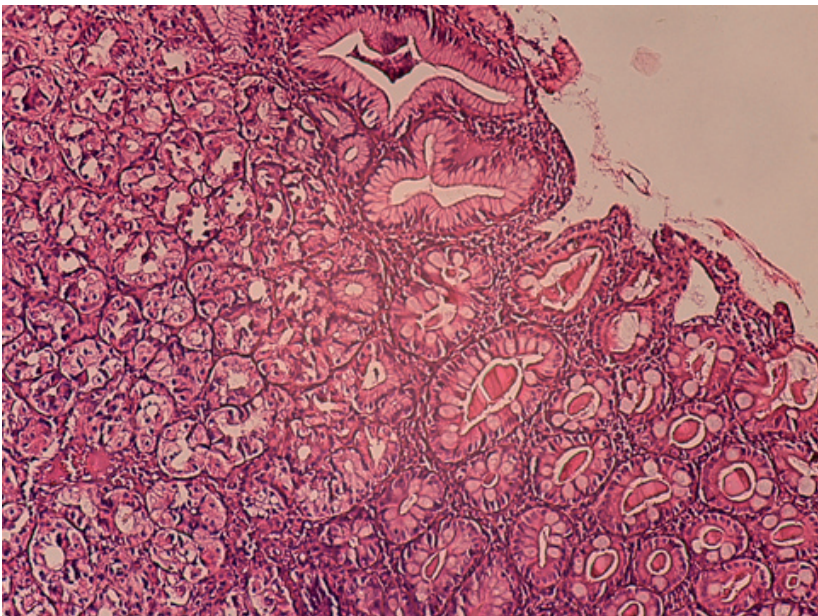
AMP 400X

LESÕES REVERSÍVEIS



METAPLASIA INTESTINAL HE (MUCOSA GÁSTRICA-HUMANO)

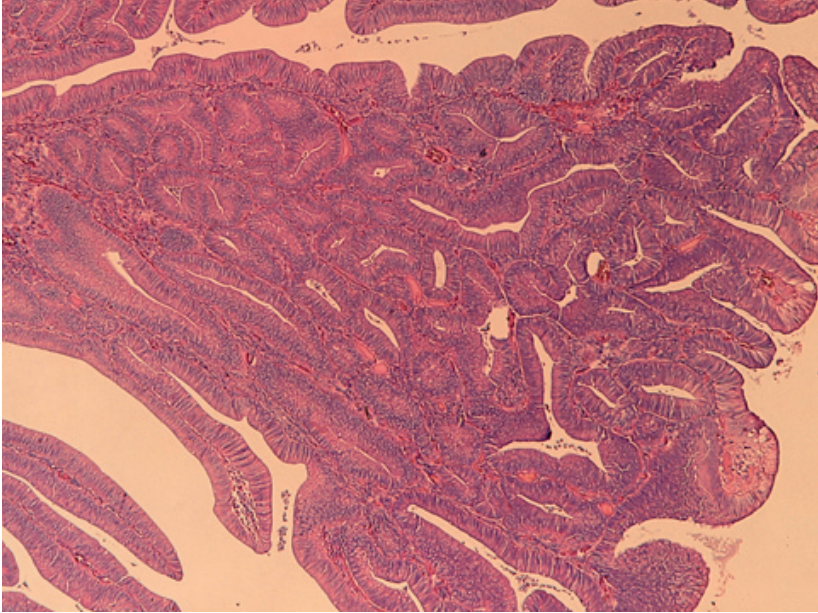
AMP 40X



METAPLASIA INTESTINAL HE (MUCOSA GÁSTRICA-HUMANO)

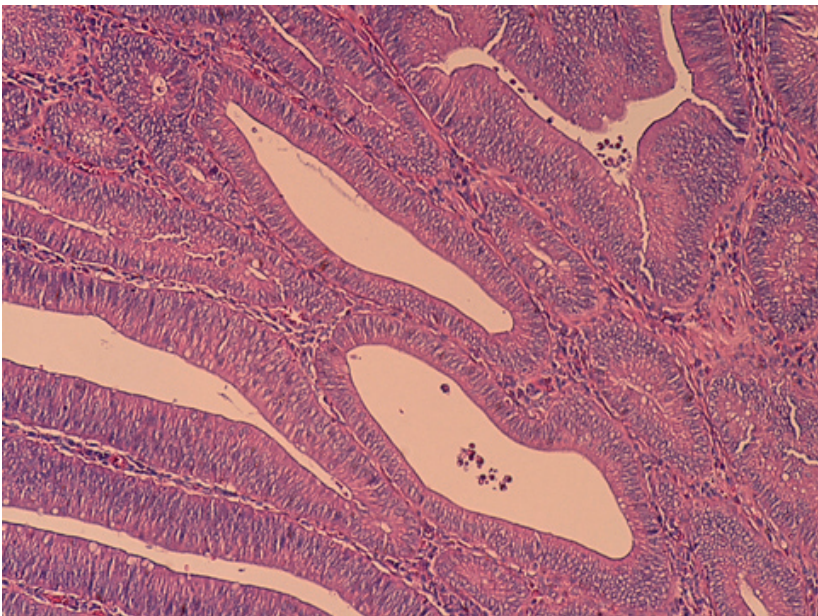
AMP 100X

LESÕES REVERSÍVEIS



DISPLASIA HE [PÓLIPO-HUMANO]

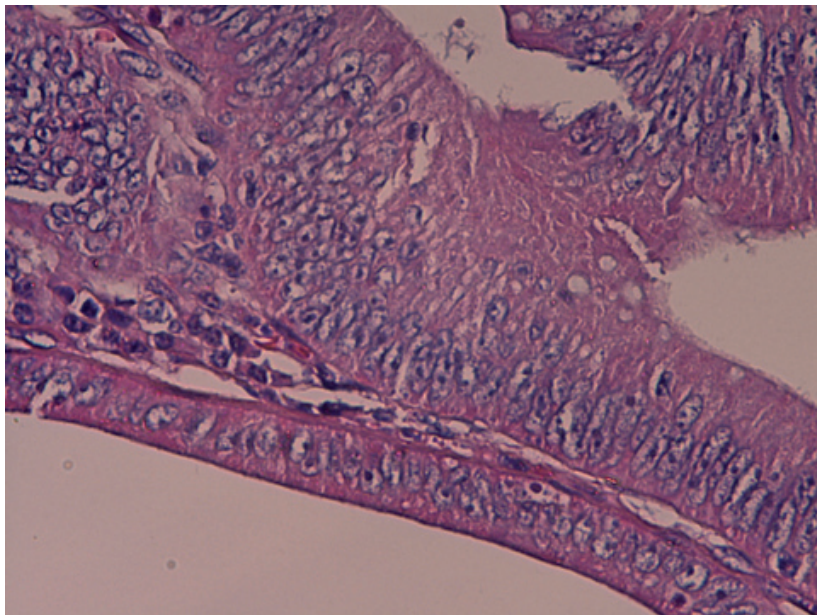
AMP 40X



DISPLASIA HE [PÓLIPO-HUMANO]

AMP 100X

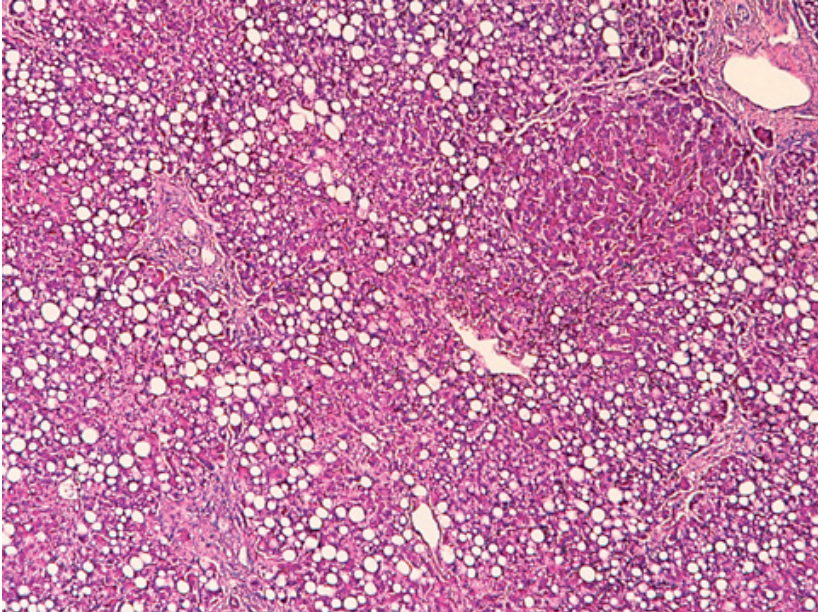
LESÕES REVERSÍVEIS



DISPLASIA HE [PÓLIPO-HUMANO]

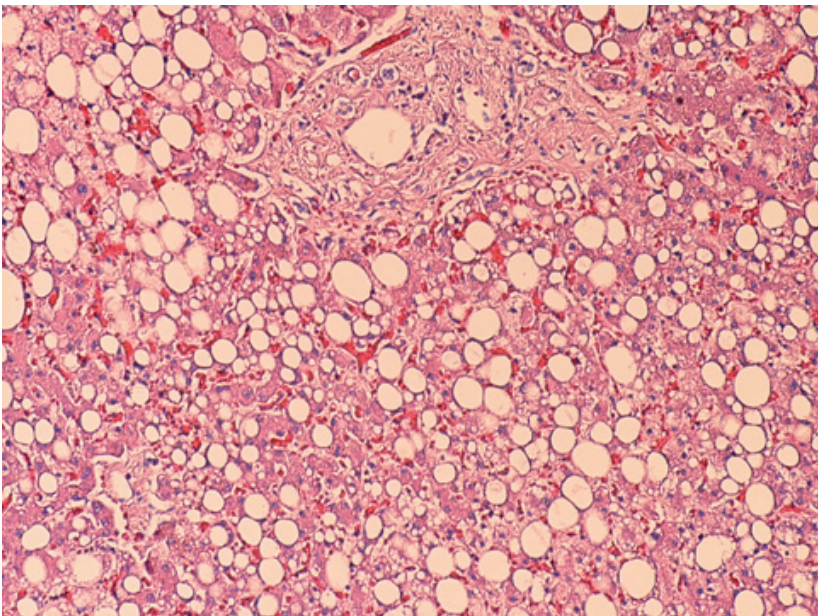
AMP 400X

LESÕES REVERSÍVEIS-ACUMULAÇÃO INTRACELULAR



LÍPIDOS HE [FÍGADO-HUMANO]

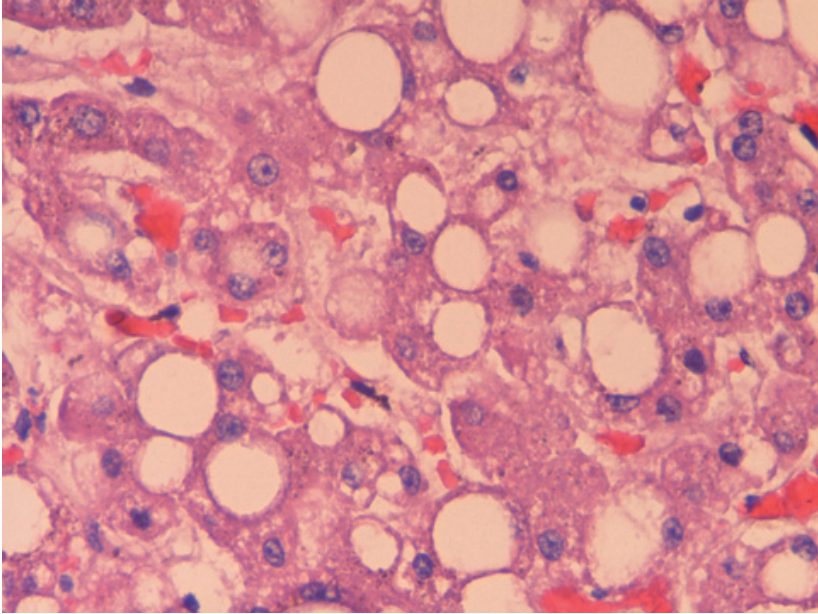
AMP 40X



LÍPIDOS HE [FÍGADO-HUMANO]

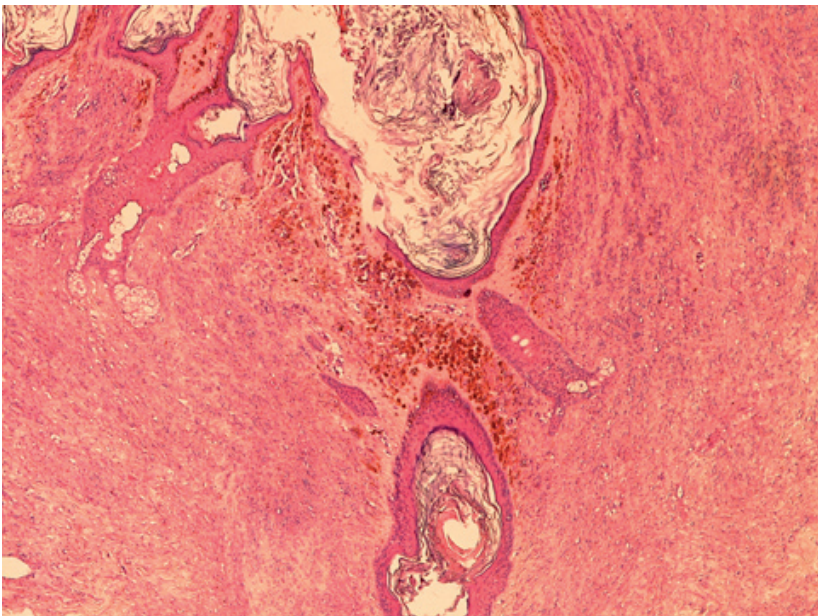
AMP 100X

LESÕES REVERSÍVEIS-ACUMULAÇÃO INTRACELULAR



LÍPIDOS HE [FÍGADO-HUMANO]

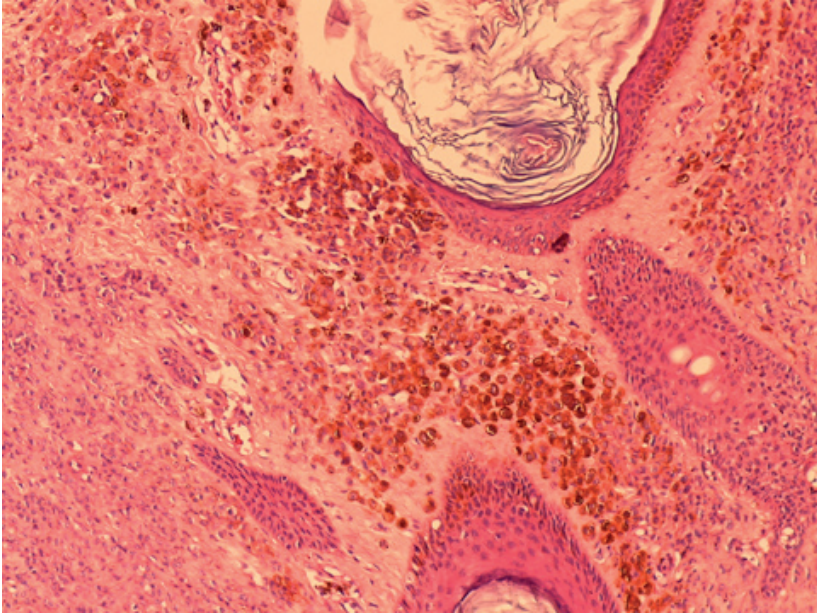
AMP 400X



MELANINA HE [NEVO-HUMANO]

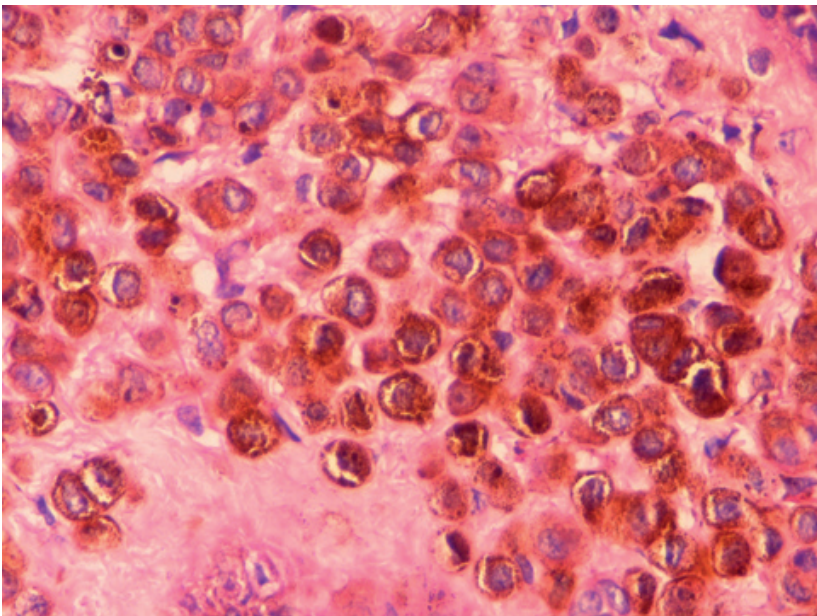
AMP 40X

LESÕES REVERSÍVEIS-ACUMULAÇÃO INTRACELULAR



MELANINA HE (NEVO-HUMANO)

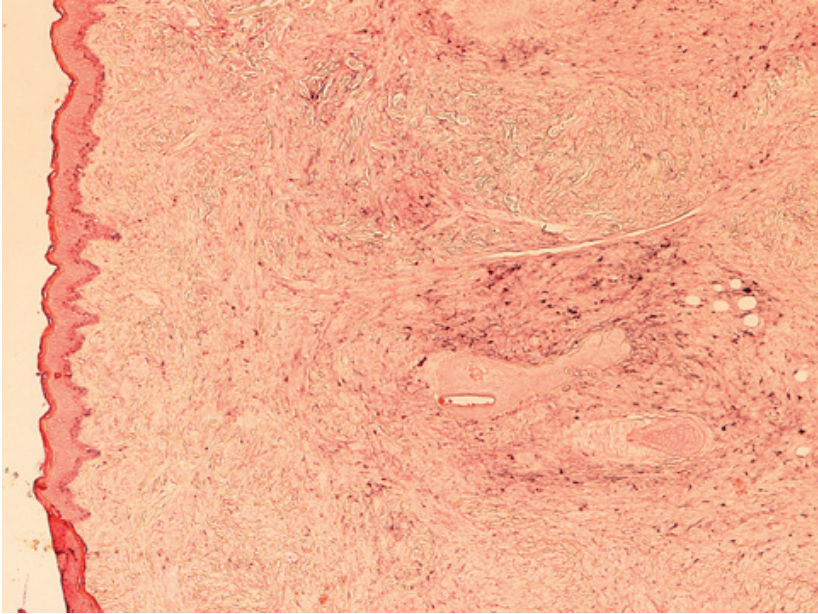
AMP 100X



MELANINA HE (NEVO-HUMANO)

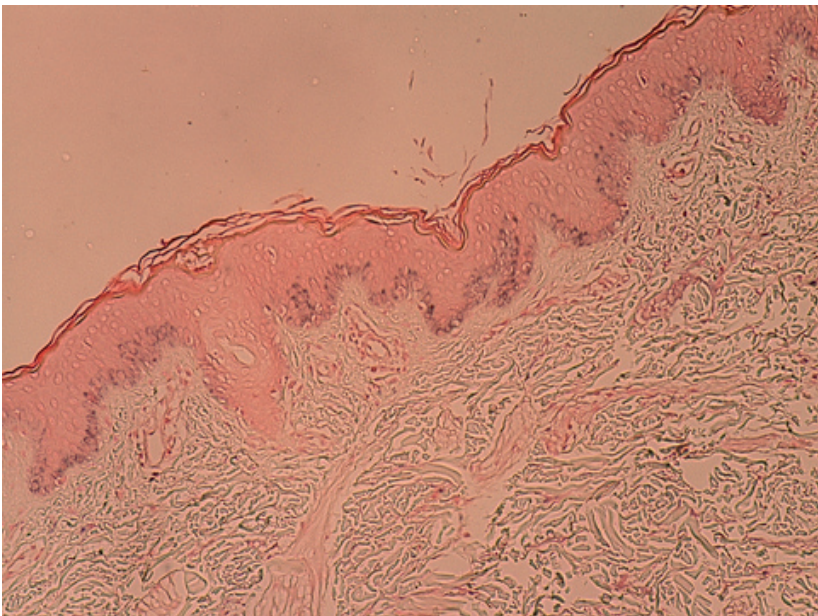
AMP 400X

LESÕES REVERSÍVEIS-ACUMULAÇÃO INTRACELULAR



MELANINA MF (NEVO-HUMANO)

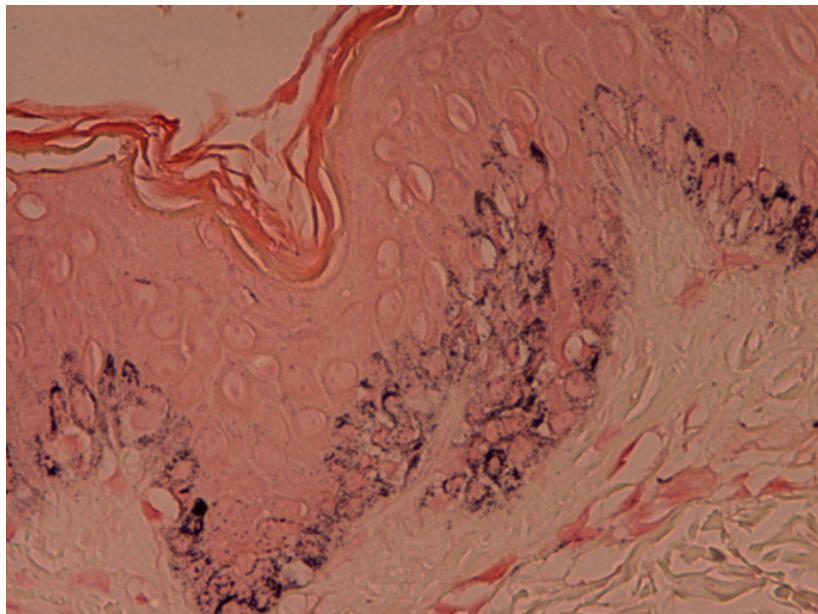
AMP 40X



MELANINA MF (NEVO-HUMANO)

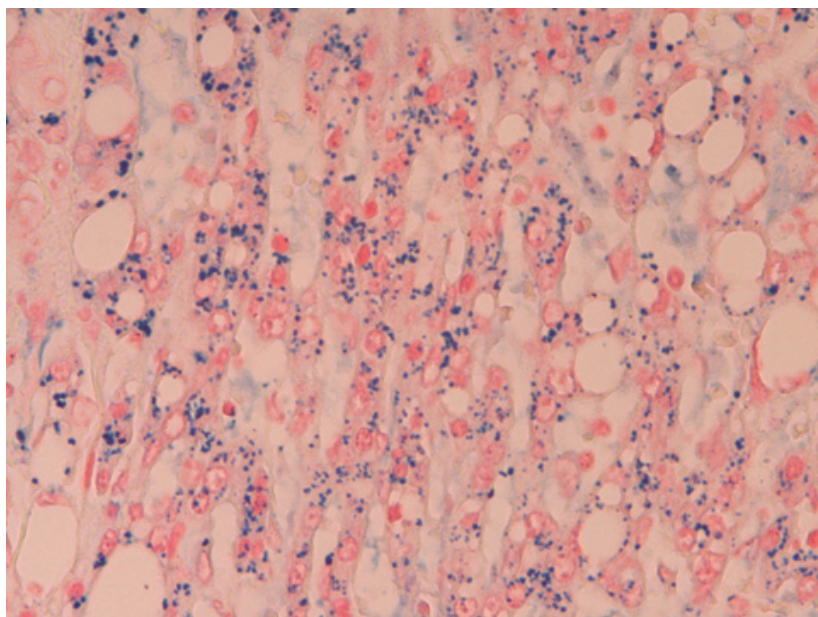
AMP 100X

LESÕES REVERSÍVEIS-ACUMULAÇÃO INTRACELULAR



MELANINA MF (NEVO-HUMANO)

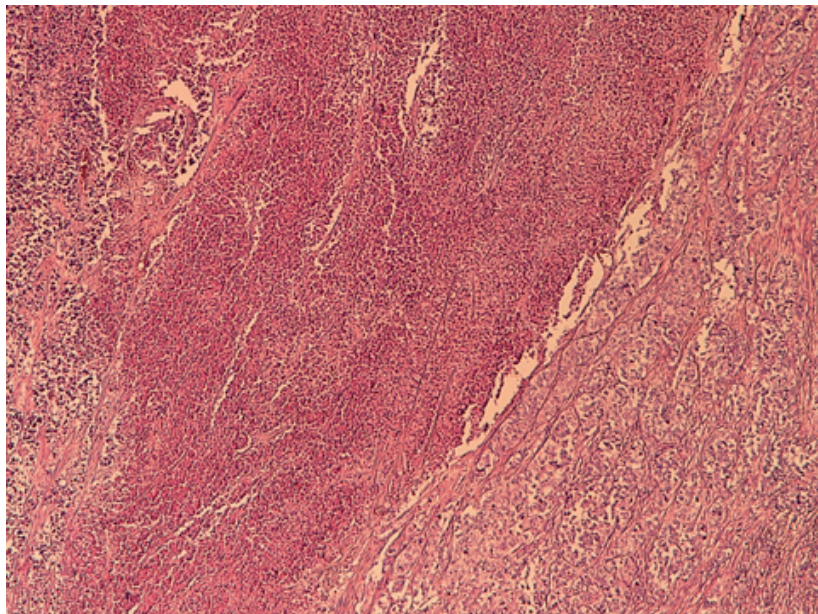
AMP 400X



FERRO AP (FÍGADO-HUMANO)

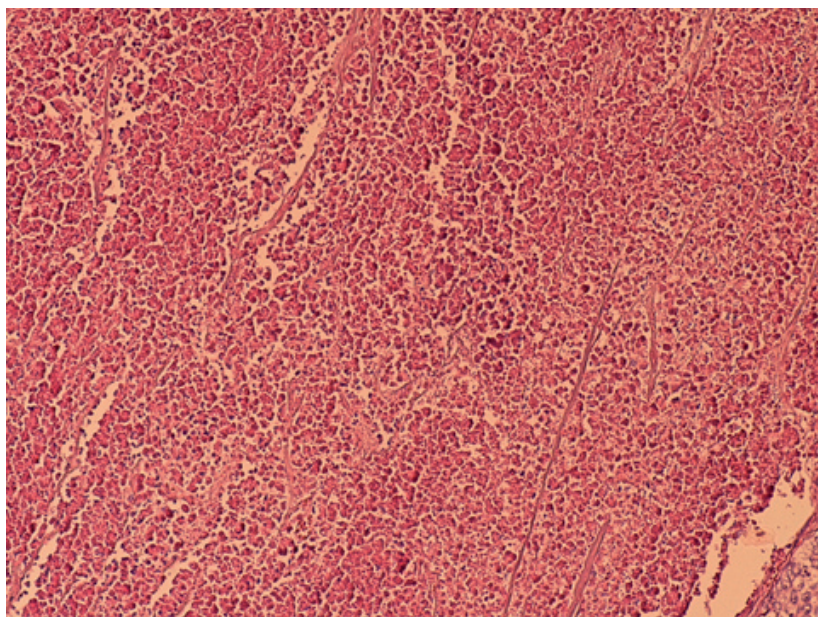
AMP 400X

LESÕES IRREVERSÍVEIS



NECROSE HE (MÚSCULO-HUMANO)

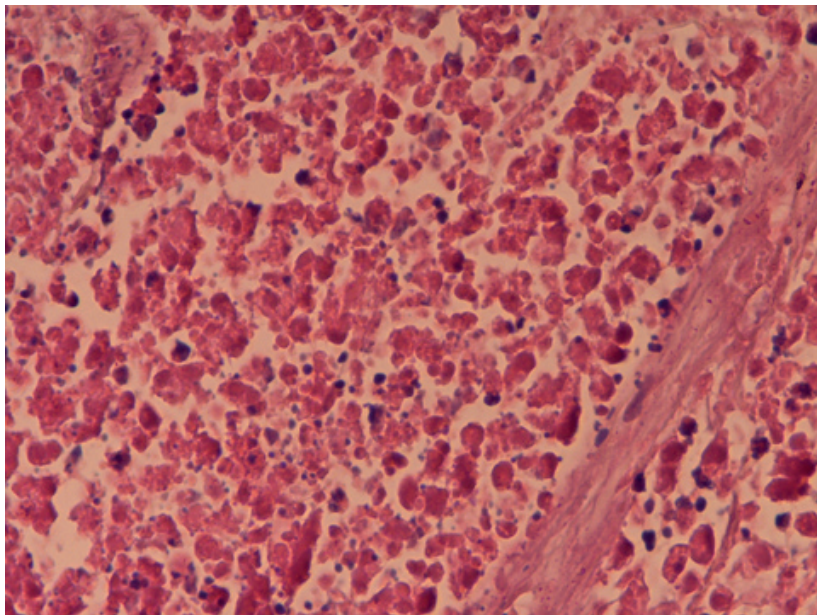
AMP 40X



NECROSE HE (MÚSCULO-HUMANO)

AMP 100X

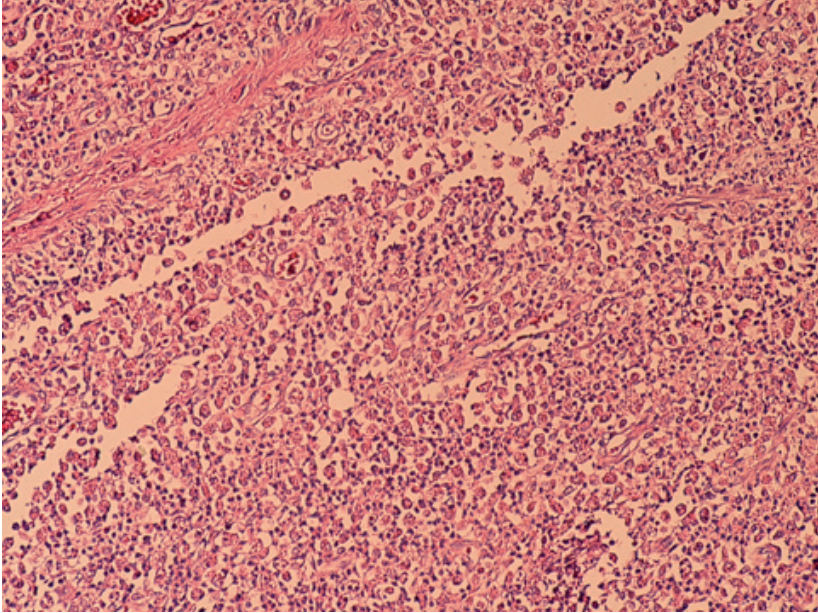
LESÕES IRREVERSÍVEIS



NECROSE HE (MÚSCULO-HUMANO)

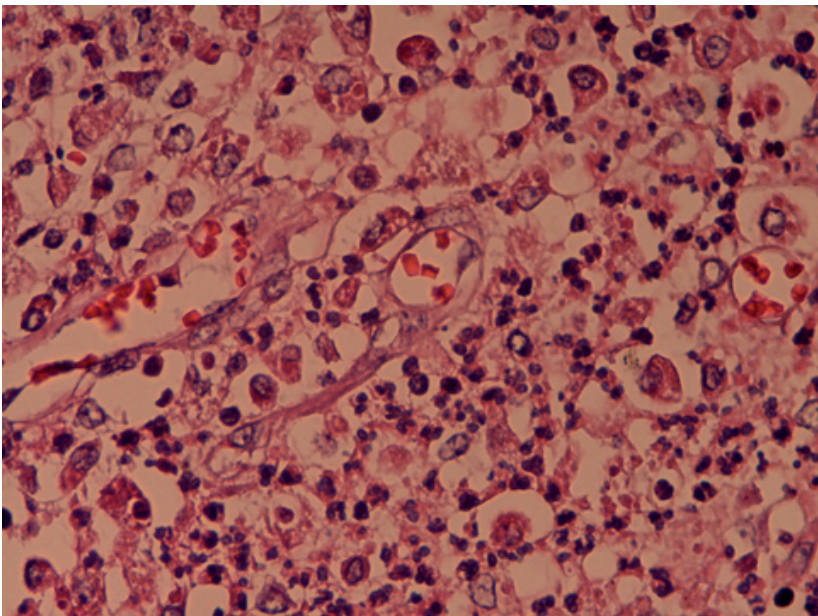
AMP 400X

INFLAMAÇÃO AGUDA



INFLAMAÇÃO AGUDA HE [VESÍCULA BILIAR-HUMANO]

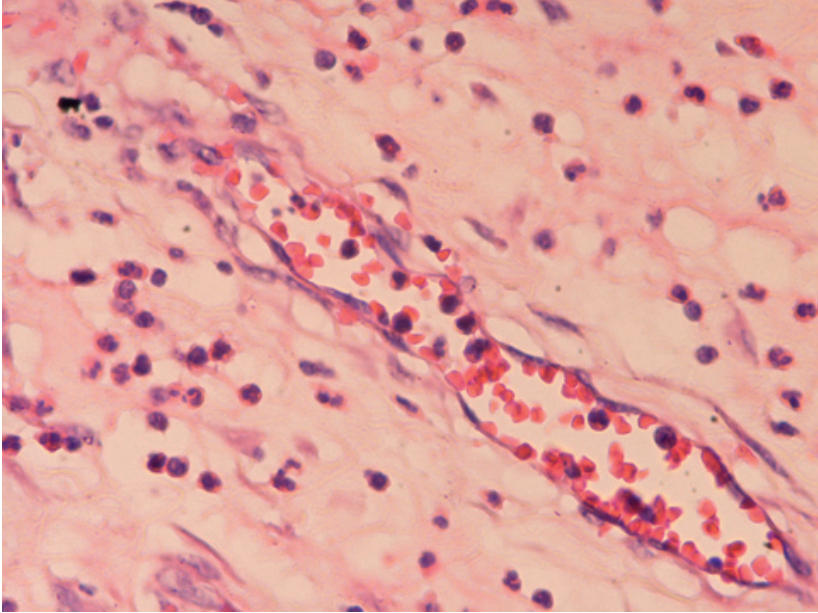
AMP 100X



EXSUDADO INFLAMATÓRIO AGUDO HE (VESÍCULA BILIAR-HUMANO)

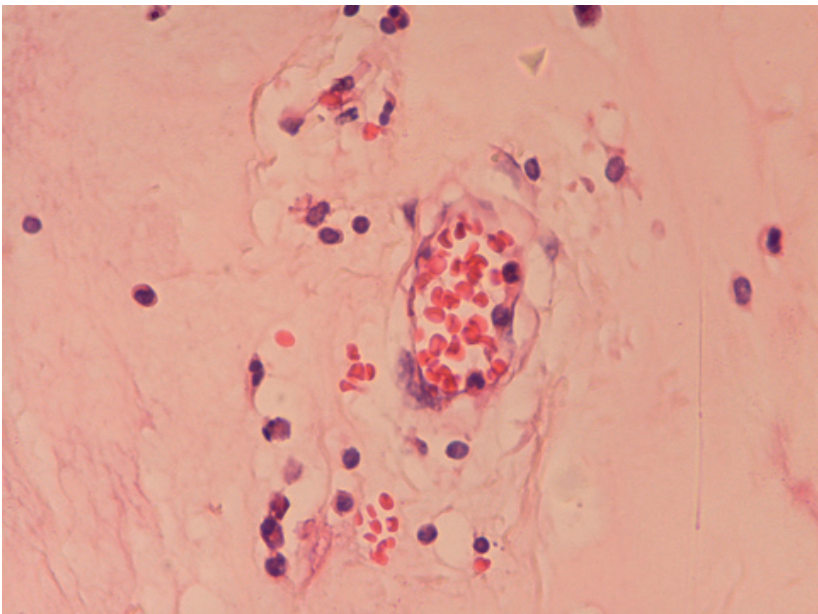
AMP 400X

INFLAMAÇÃO AGUDA - FORMAÇÃO DO EXSUDADO INFLAMATÓRIO AGUDO



PAVIMENTAÇÃO HE (INTESTINO-HUMANO)

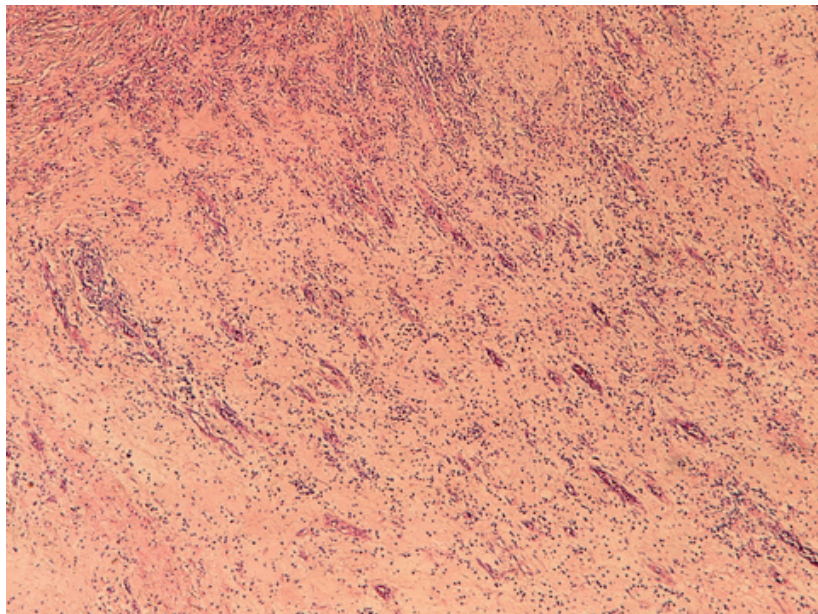
AMP 400X



DIAPDESE HE (INTESTINO-HUMANO)

AMP 400X

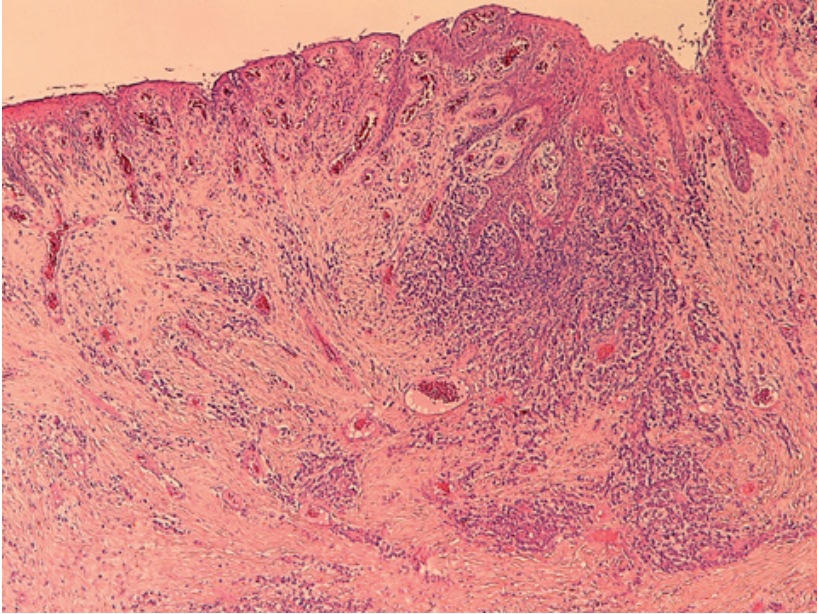
INFLAMAÇÃO AGUDA - FORMAÇÃO DO EXSUDADO INFLAMATÓRIO AGUDO



MIGRAÇÃO HE (INTESTINO-HUMANO)

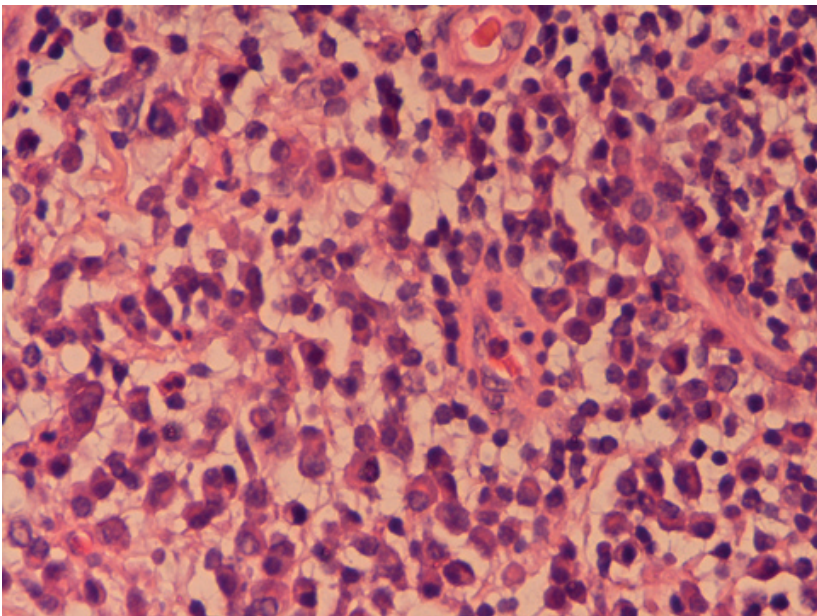
AMP 40X

INFLAMAÇÃO CRÔNICA



INFLAMAÇÃO CRÔNICA HE (MUCOSA ORAL-HUMANO)

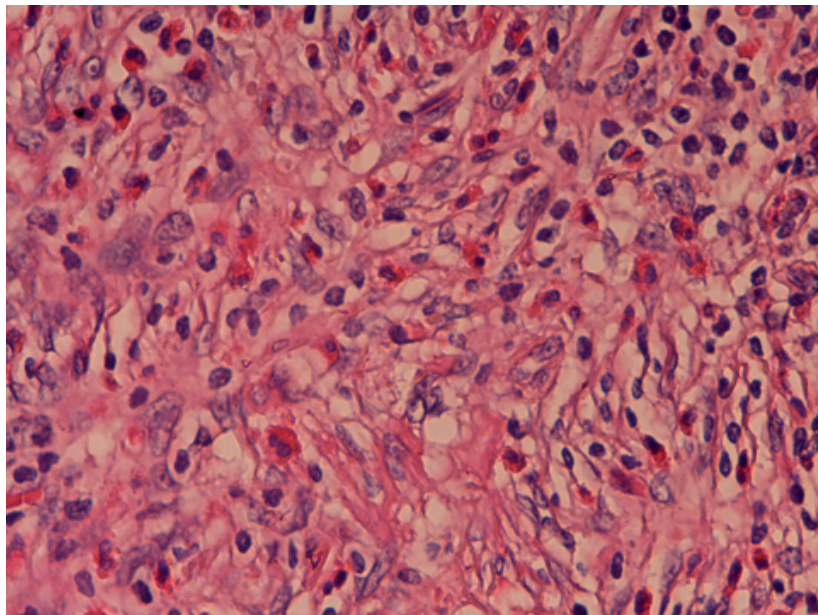
AMP 40X



INFLAMAÇÃO - PLASMÓCITOS HE (HUMANO)

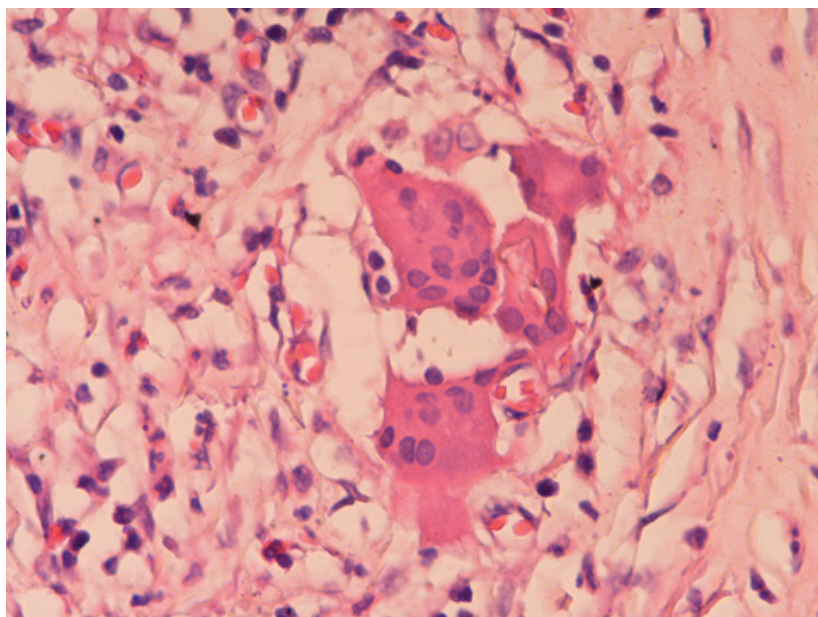
AMP 400X

INFLAMAÇÃO CRÓNICA



INFLAMAÇÃO - EOSINÓFILOS HE (HUMANO)

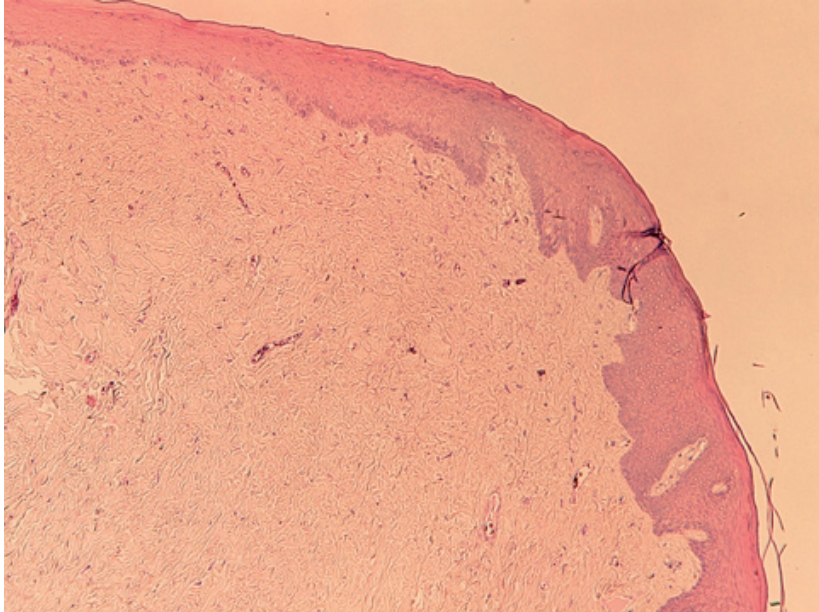
AMP 400X



CÉLULA GIGANTE DE REACÇÃO A CORPO ESTRANHO HE (INTESTINO-HUMANO)

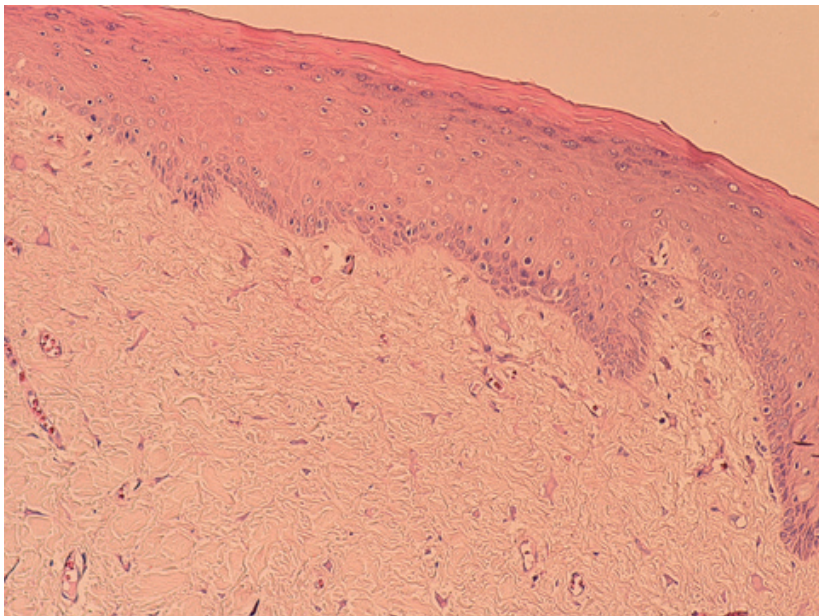
AMP 400X

CICATRIZAÇÃO



TECIDO CICATRICIAL HE (MUCOSA ORAL-HUMANO)

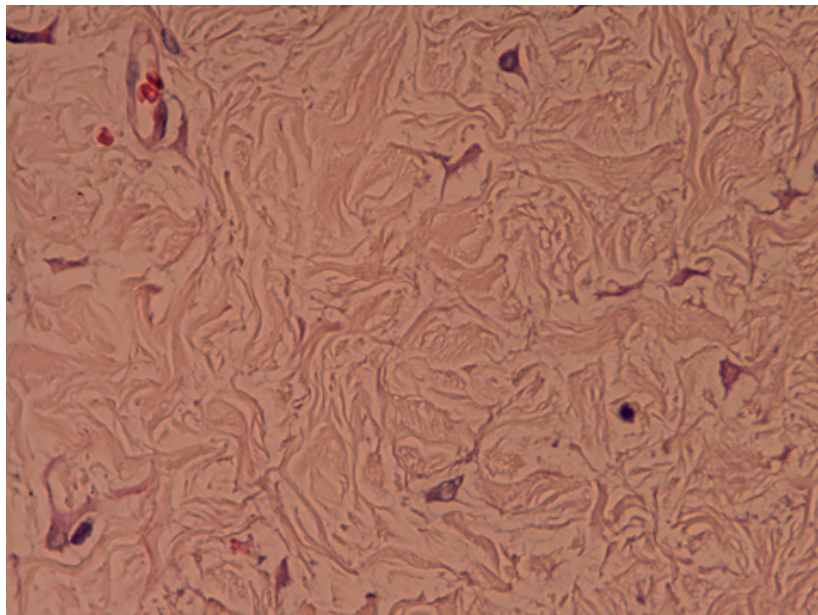
AMP 40X



TECIDO CICATRICIAL HE (MUCOSA ORAL-HUMANO)

AMP 100X

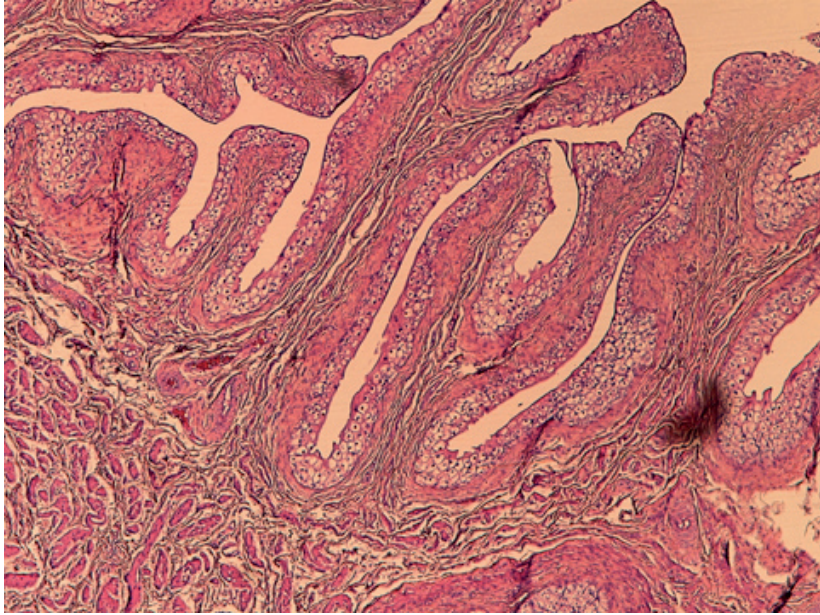
CICATRIZAÇÃO



TECIDO CICATRICAL HE (MUCOSA ORAL-HUMANO)

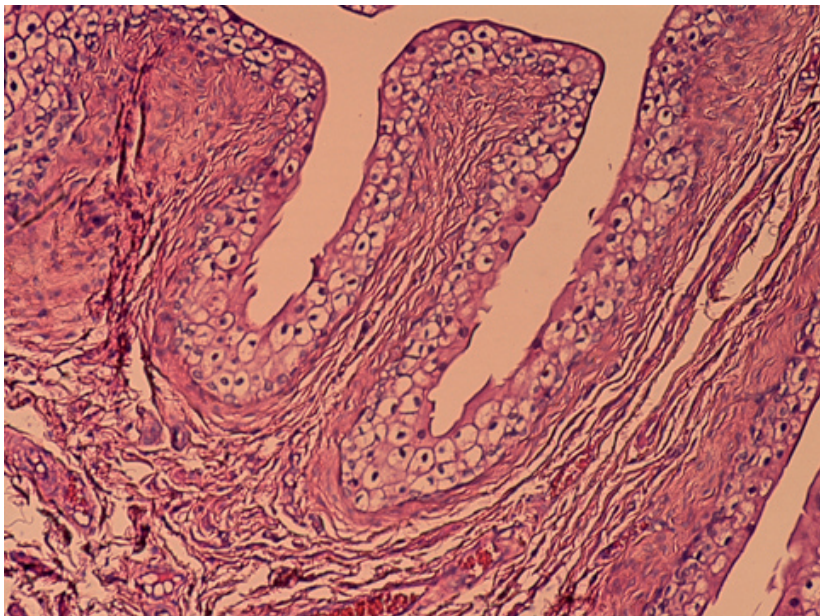
AMP 400X

OUTRAS PATOLOGIAS



PAPILOMA HE [BEXIGA-COELHO]

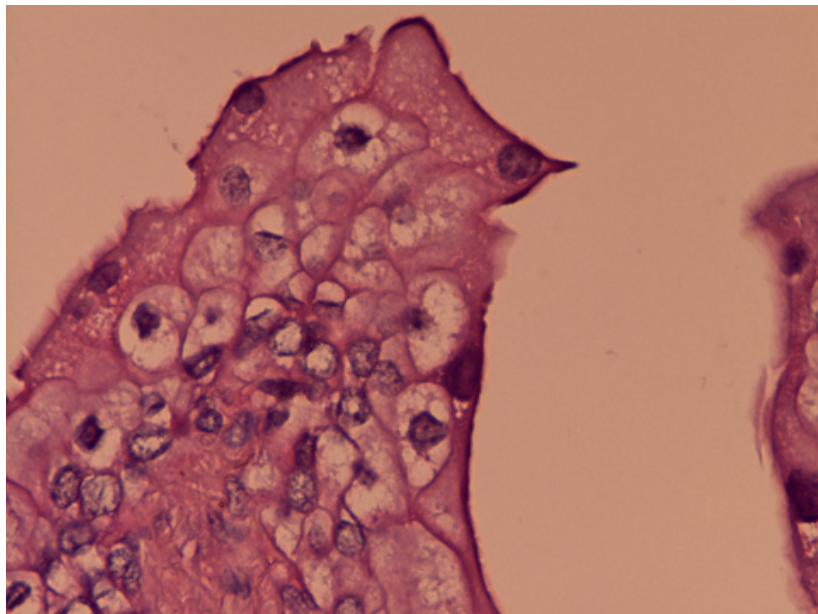
AMP 40X



PAPILOMA HE [BEXIGA-COELHO]

AMP 100X

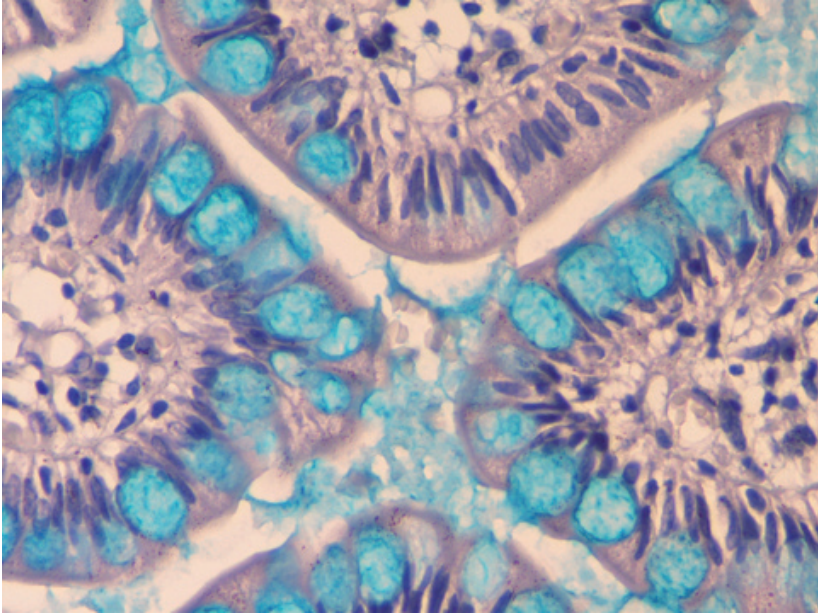
OUTRAS PATOLOGIAS



PAPILOMA HE [BEXIGA-COELHO]

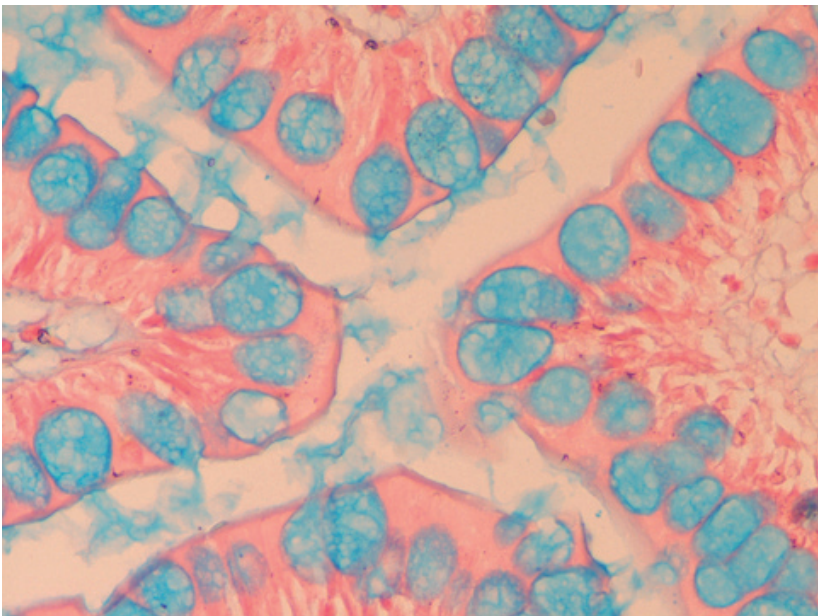
AMP 400X

COLORAÇÕES ESPECIAIS



AZUL DE ALCIÃO [MUCOSUBSTÂNCIAS ÁCIDAS]

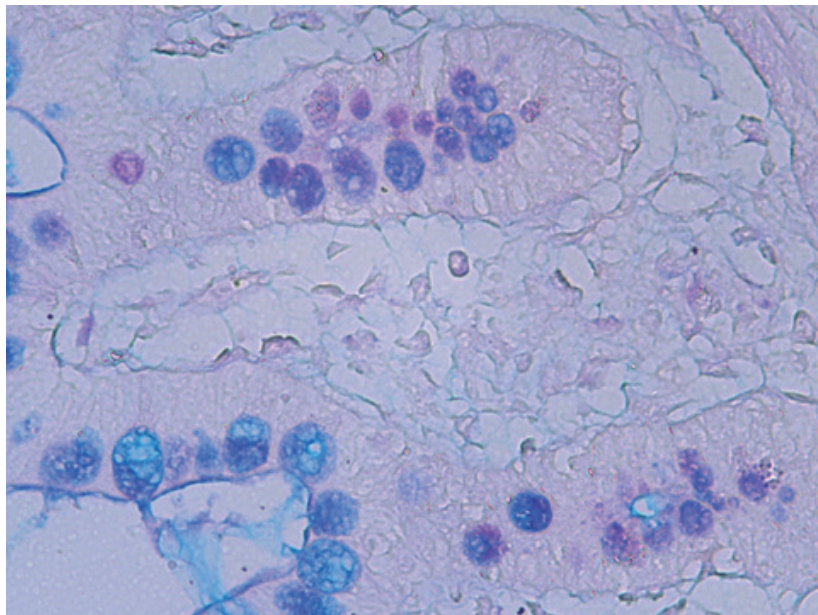
AMP 400X



AZUL DE ALCIÃO/VERMELHO NEUTRO [MUCOSUBSTÂNCIAS ÁCIDAS]

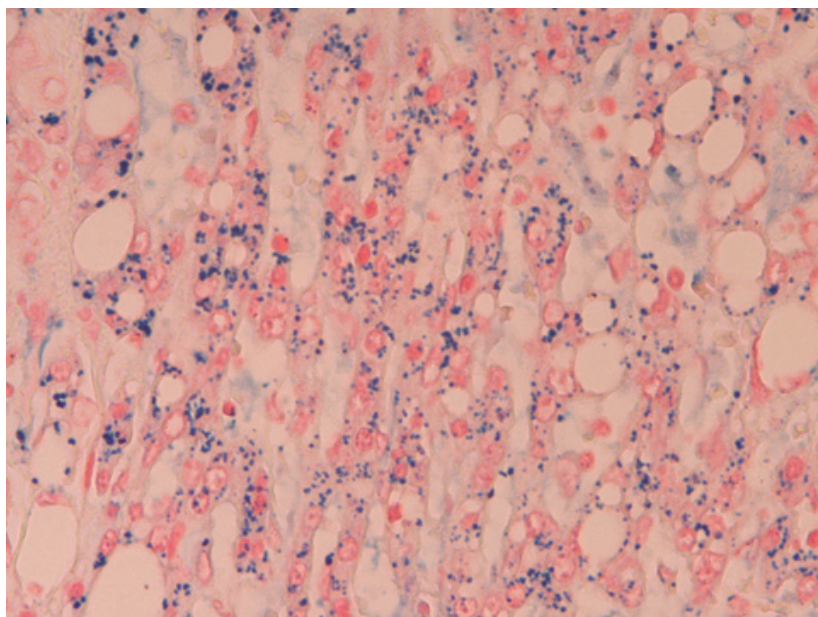
AMP 400X

COLORAÇÕES ESPECIAIS



AZUL DE ALCIÃO E PAS (MUCOSUBSTÂNCIAS ÁCIDAS E NEUTRAS)

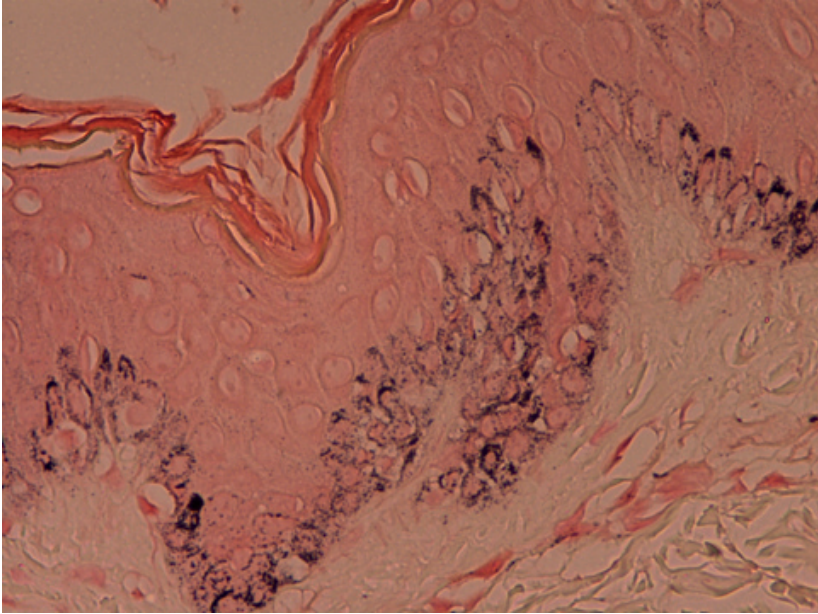
AMP 400X



AZUL DA PRÚSSIA OU PERLS (HEMOSSIDERINA)

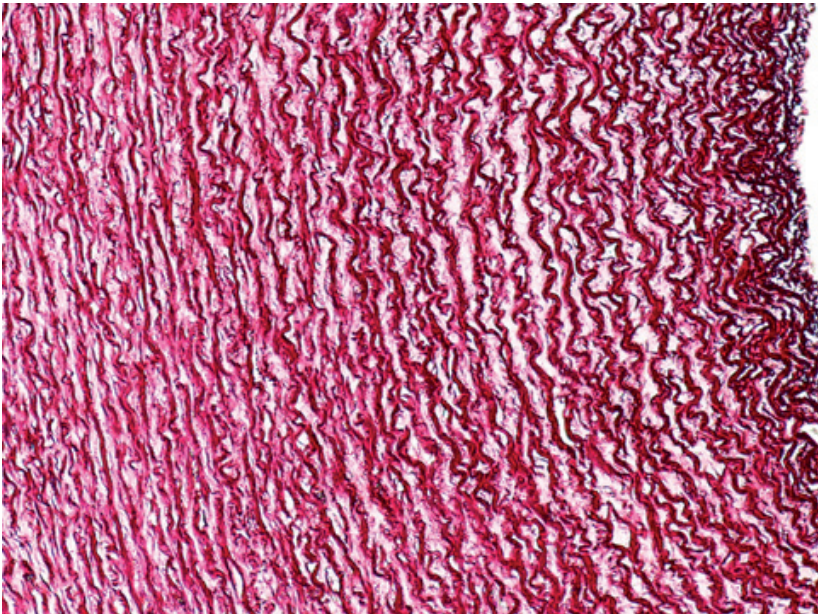
AMP 400X

COLORAÇÕES ESPECIAIS



MASSON FONTANA (MELANINA)

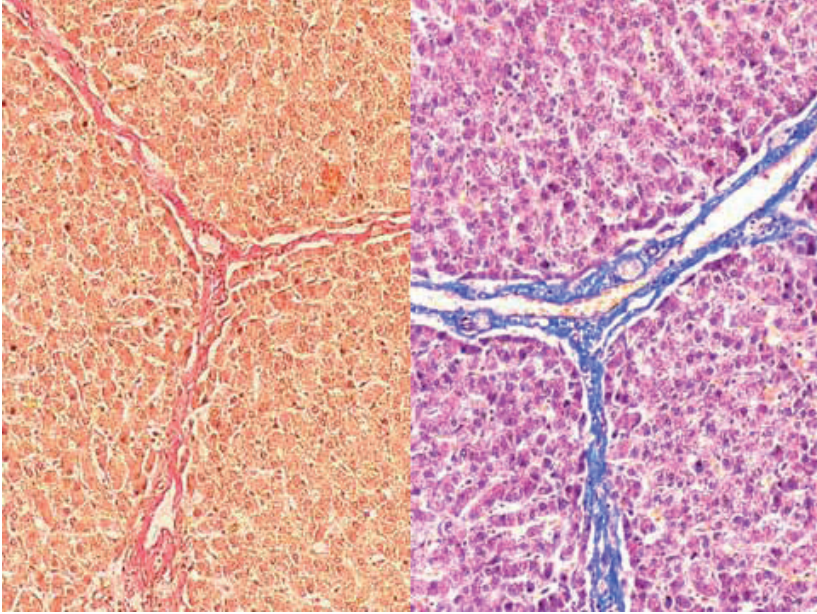
AMP 400X



ORCEÍNA (FIBRAS ELÁSTICAS)

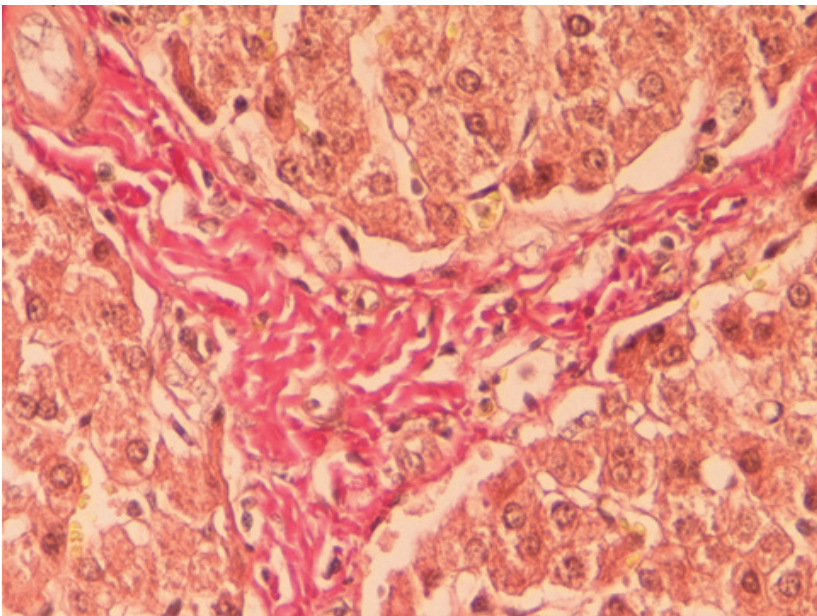
AMP 100X

COLORAÇÕES ESPECIAIS



VAN GIESON / TRICRÓMIO DE MASSON (FIBRAS DE COLAGÉNIO)

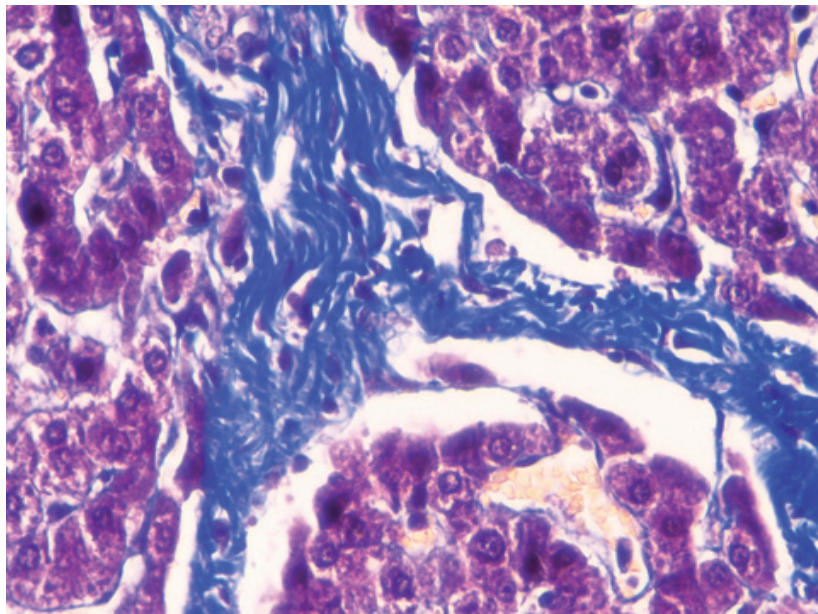
AMP 100X



VAN GIESON (FIBRAS DE COLAGÉNIO)

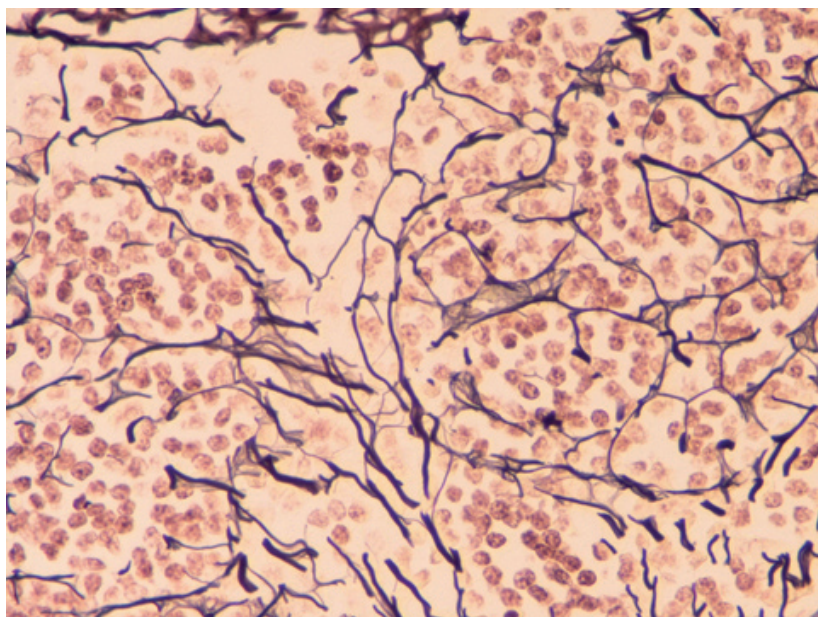
AMP 400X

COLORAÇÕES ESPECIAIS



TRICRÓMIO DE MASSON (FIBRAS DE COLAGÊNIO)

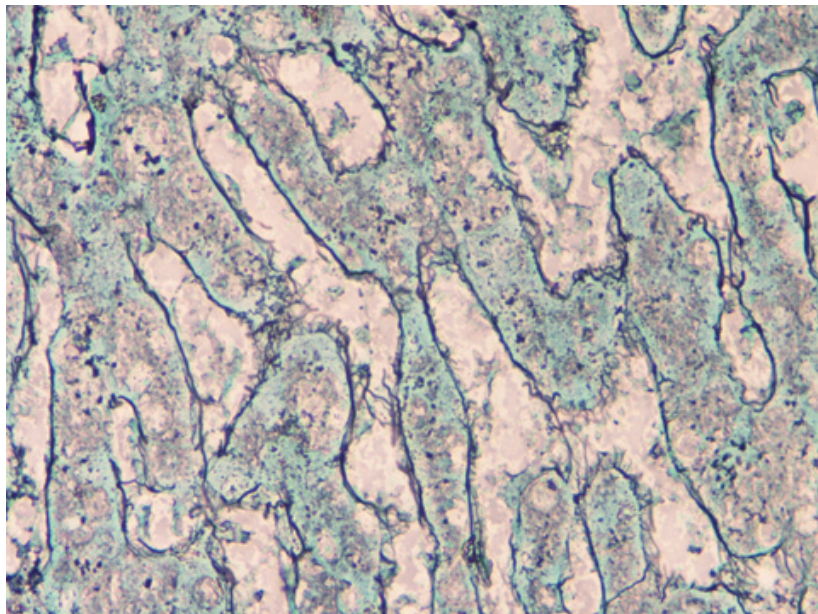
AMP 400X



RETICULINA (FIBRAS RETICULARES)

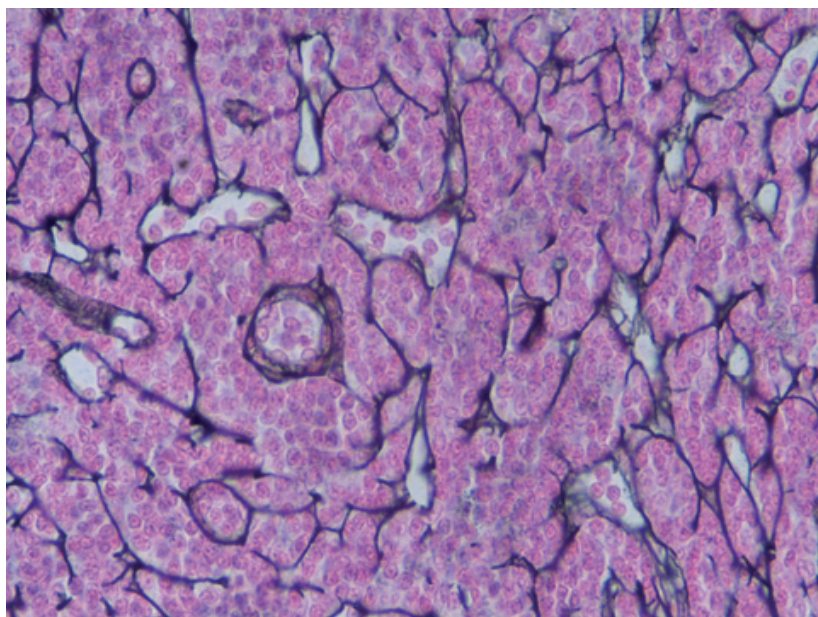
AMP 400X

COLORAÇÕES ESPECIAIS



RETICULINA E VERDE METILO (FIBRAS RETICULARES)

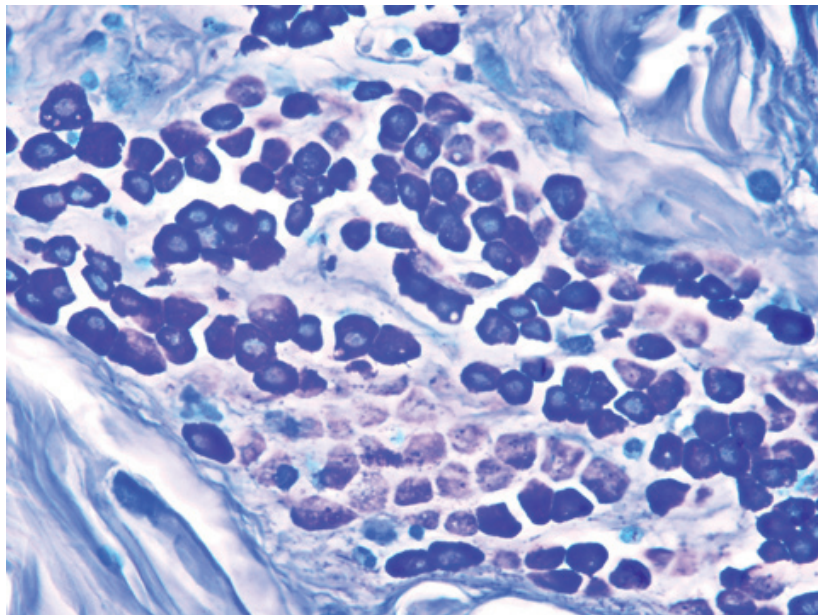
AMP 400X



RETICULINA E VERMELHO NEUTRO (FIBRAS RETICULARES)

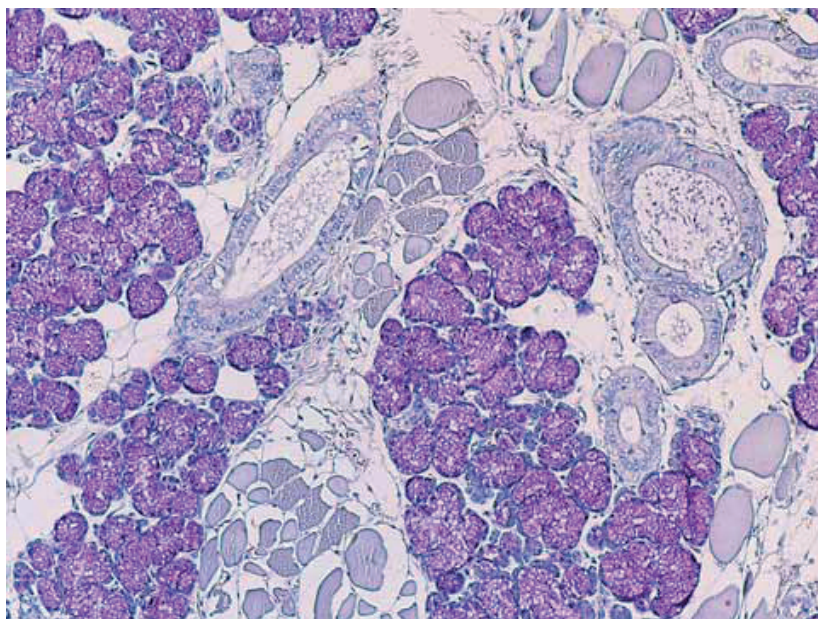
AMP 400X

COLORAÇÕES ESPECIAIS



AZUL DE TOLUIDINA (MASTÓCITOS)

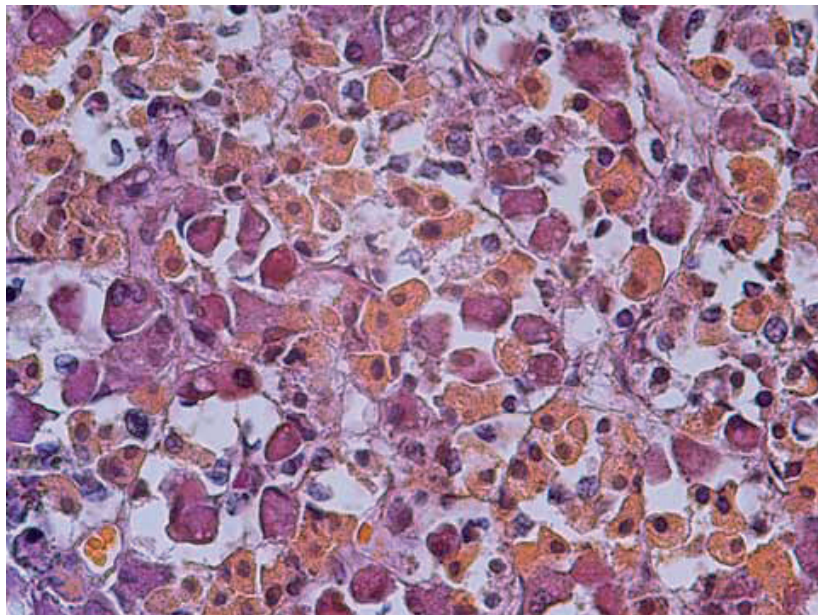
AMP 400X



ÁCIDO PERIÓDICO DE SHIFF - PAS (MUCOSUBSTÂNCIAS NEUTRAS)

AMP 100X

COLORAÇÕES ESPECIAIS



PAS E ORANGE G (ADENO-HIPÓFISE)

AMP 400X